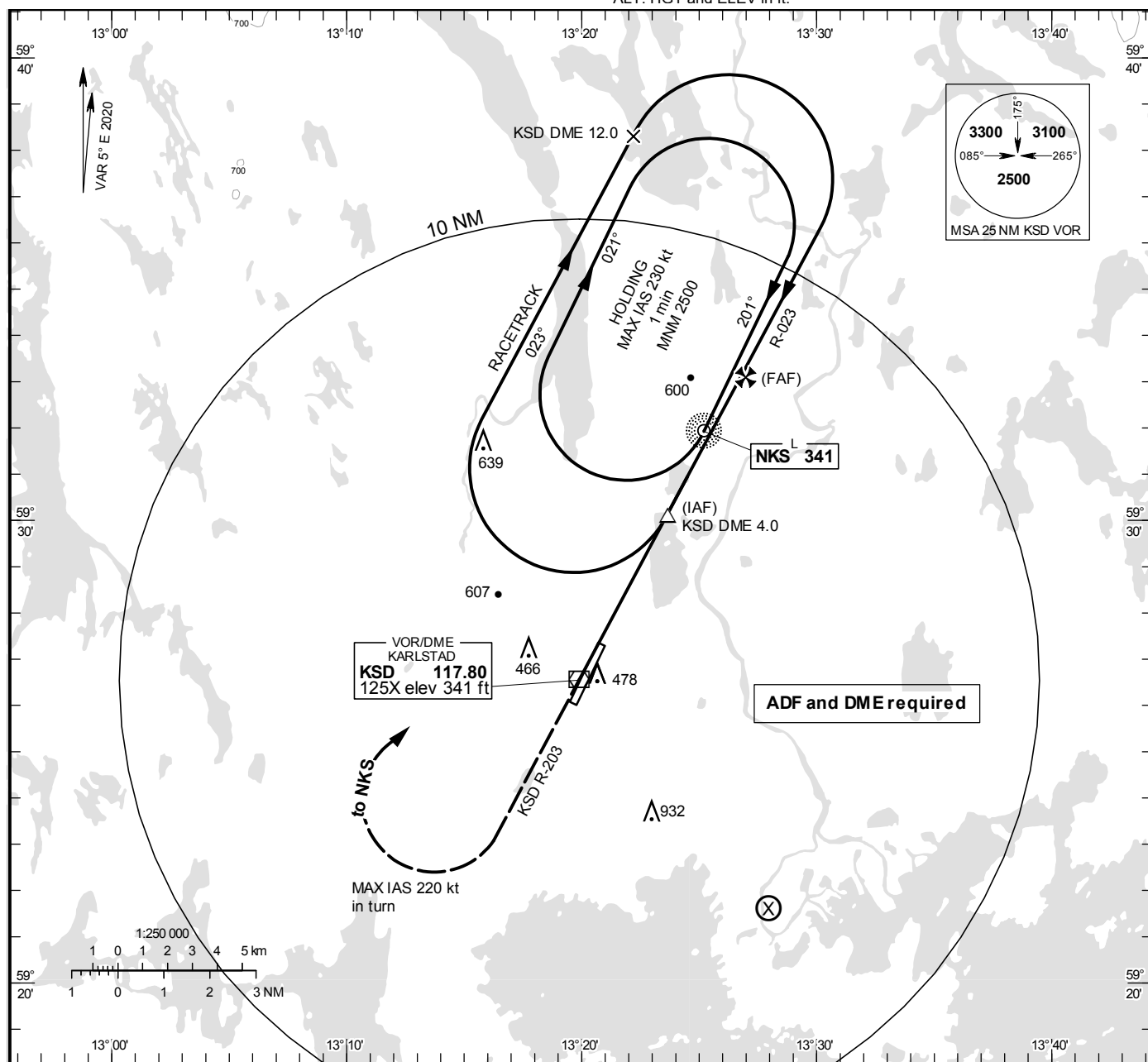


KARLSTAD
VOR RWY 21

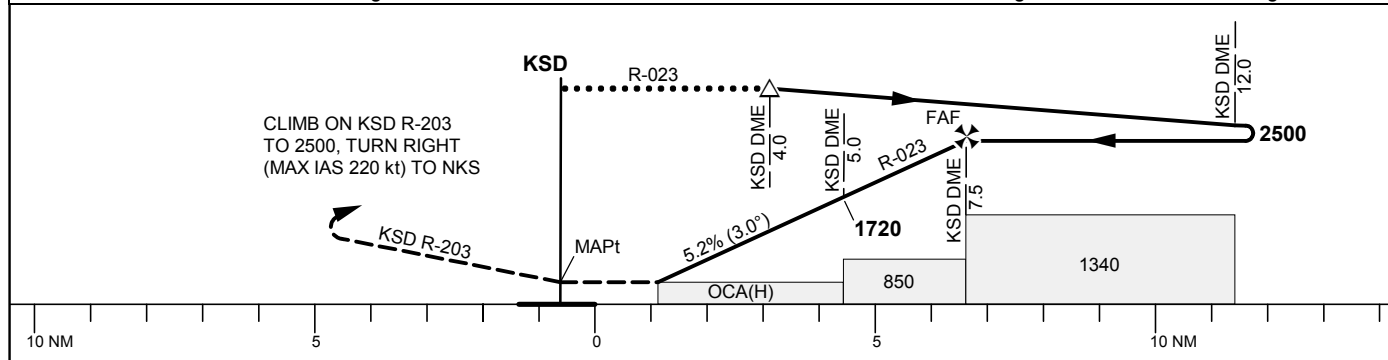
KARLSTAD TOWER 119.455

THR ELEV 352.9 ft, AD ELEV 353 ft
OCH are related to THR.
Circling OCH are related to AD ELEV.
BRG are MAG
ALT. HGT and ELEV in ft.

**INSTRUMENT
APPROACH
CHART – ICAO**



TA 5000 ft AMSL Circling MAX IAS 200 kt Final APCH line offset 2° *Timing not authorized for defining the MAPt



OCA (H)					Final approach		Distance FAF-MAPt 7.5 NM*					
Cat of ACFT	A	B	C	D	DME KSD NM		7	6	5	4	3	2
Straight-in Approach	730(380)				ALT		2360	2040	1720	1400	1080	760
Circling	780(430)	910(560)	1330(980)	1330(980)	GS	kt	80	100	120	140	160	180
Circling NW RWY	770(420)	910(560)	1010(660)	1040(690)	Time	min:s	4:35	3:40	3:03	2:37	2:17	2:02
					Rate of descent	ft/min	425	530	635	745	850	955

CHANGE: Editorial